

# FlushKnife

FUJIFILM

## ESD Knife

### Ball Tip Design

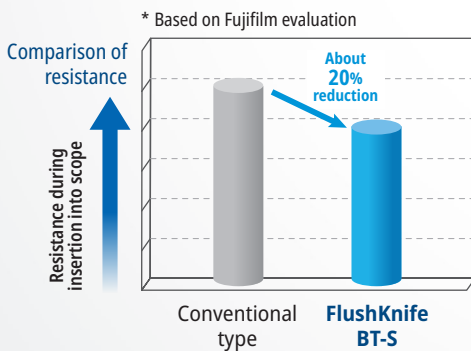
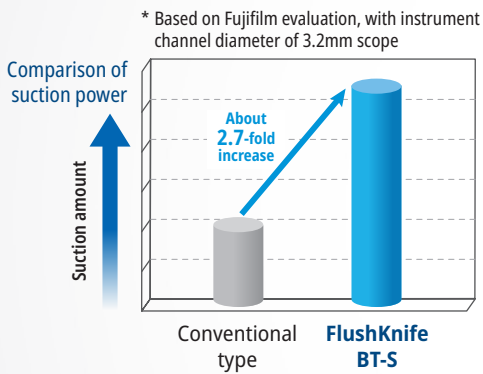
- Provides stable incision, dissection and coagulation

### Waterjet Function

- Strong waterjet helps an effective operation by washing off lesions
- Can be used for submucosal injection

### Flexible and Thinner Sheath

- Increased suction capability
- Smoother scope insertion
- Smaller bending radius



\* Based on Fujifilm evaluation, with instrument channel diameter of 3.2mm scope



Conventional type

FlushKnife BT-S

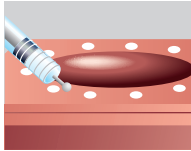


## 6 Major Functions with FlushKnife



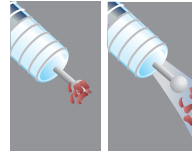
### 1 Marking

Makes clear marking around the lesion.



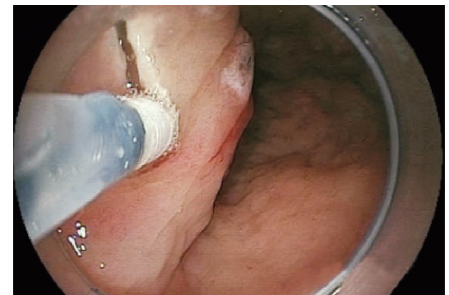
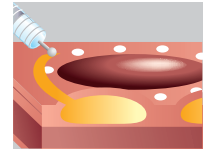
### 2 Water jet

Washes off lesion tissue adhering to the tip as needed.



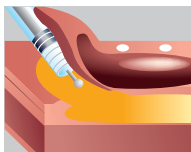
### 3 Mucosal incision

Able to incise the target tissue smoothly from side to side and up to down.



### 4 Submucosal dissection

The variation of the tip type and length realizes the optimal approach for each lesion and technique.

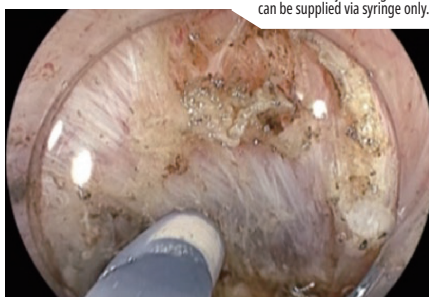


### 5 Submucosal injection

Injection of saline or submucosal injection agent\* into the submucosal layer which is exposed after dissection can be performed.

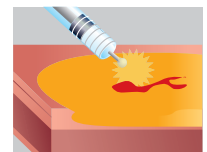


\* Submucosal injection agent can be supplied via syringe only.




### 6 Coagulation

Able to arrest small amounts of bleeding during dissection without replacing the knife.



## Ordering Information

	Product Code	Slitter Portion Length	Sheath Color	Sheath Length	Working Channel	Maximum Diameter of Insertion Portion
	DK2620JI -B15-	1.5mm	Green	2,000mm	2.8mm	2.7mm
	DK2620JI -B20-	2.0mm	Blue			