



EG-760Z

Upper G.I. tract magnification scopes





EG-760Z

Upper G.I. tract magnification scopes

Zoom function

Magnification Mode	Normal	Low	Middle	High	Maximum (x145*)
Continuous	[Progressive zoom bar]				
Step zoom	2 Step	[Zoom bar]			
	3 Step	[Zoom bar]	[Zoom bar]		
	5 Step	[Zoom bar]	[Zoom bar]	[Zoom bar]	[Zoom bar]

*When using a 26 inch HD LCD monitor

With Continuous mode, Step Zoom mode of "2 Step", "3 Step" and "5 Step" are available. In this modes, images can be magnified in stages by simple press of button.



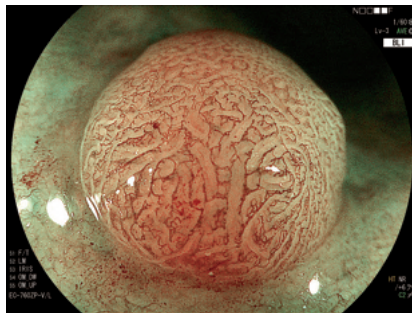
Switches for zoom in/out

Magnification Images

• Low



• Middle



• Maximum



Specification

EG-760Z	
Field of view	Normal: 140° Closest: 56°
Viewing direction	0° (Forward)
Observation range	1.5~100 mm
	Normal: 3~100 mm Closest: 1.5~2.5 mm
Bending capability	UP: 210° DOWN: 90° RIGHT: 100° LEFT: 100°
Working length	1,100 mm
Total length	1,400 mm
Distal end diameter	9.9 mm
Insertion tube diameter	9.8 mm
Minimum instrument channel diameter	2.8 mm
Image size	Super image

Product name: Video Endoscope GMDN: 38805
Generic name: Flexible video gastroduodenoscope

