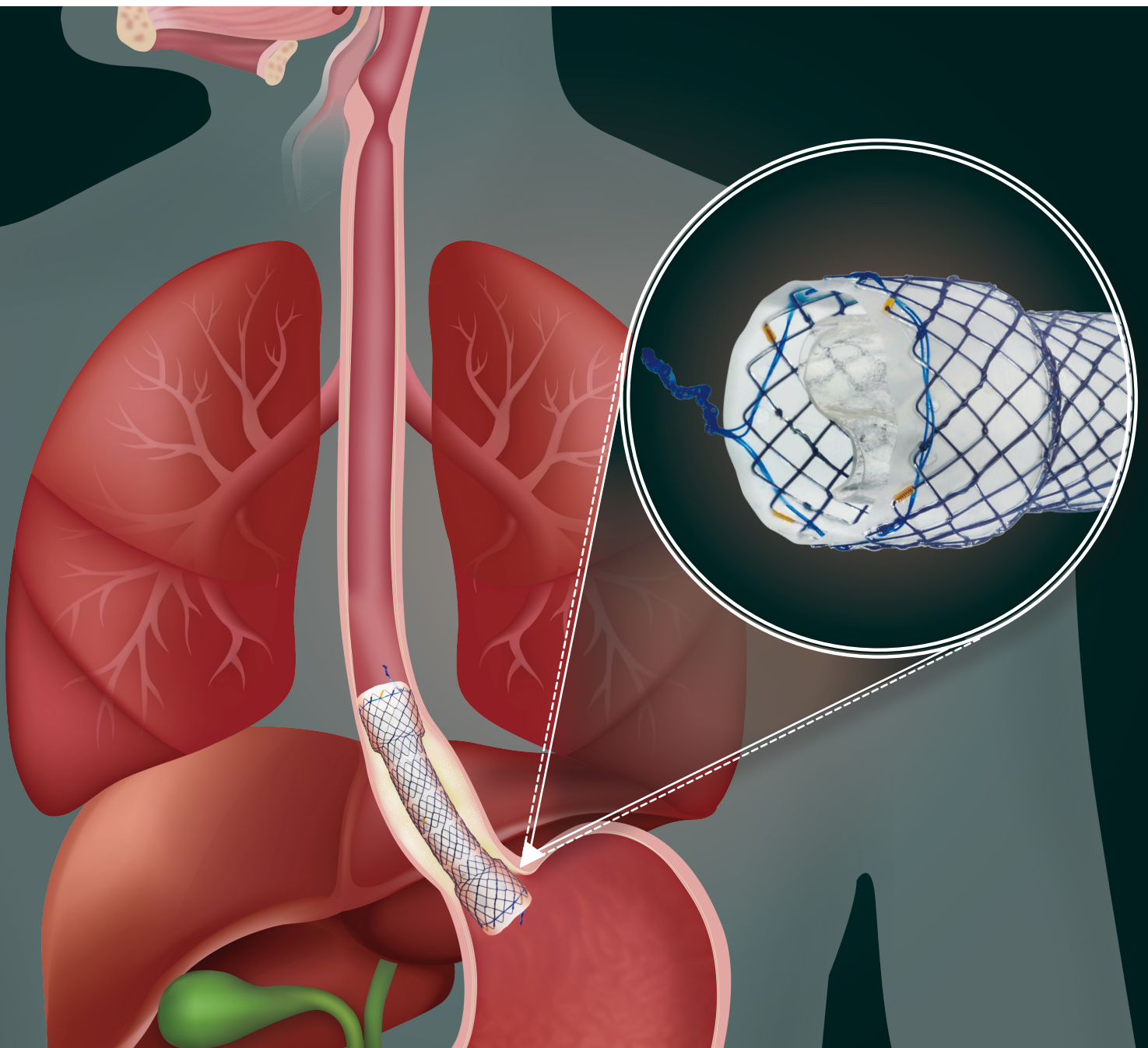


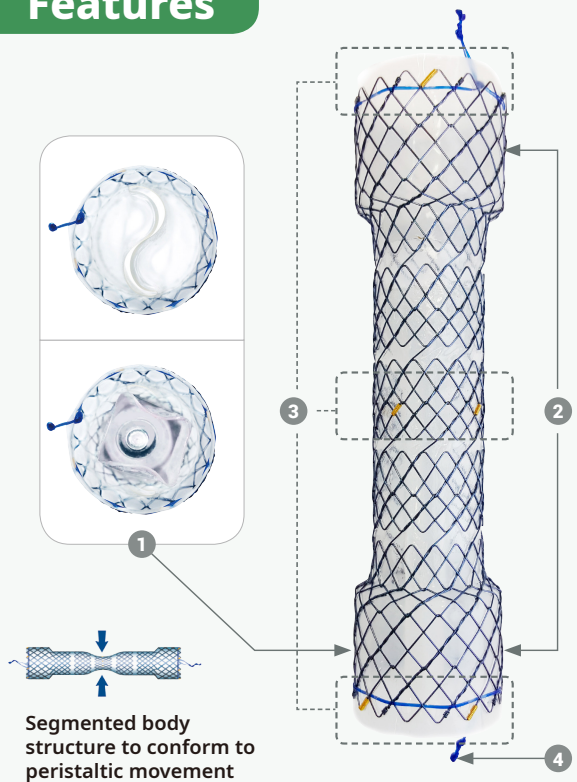
CHOOSTENT[®] Esophagus Valve (CCC)



“Esophageal Malignant Obstruction”

CHOOSTENT[®] Esophagus Valve (CCC)

Features



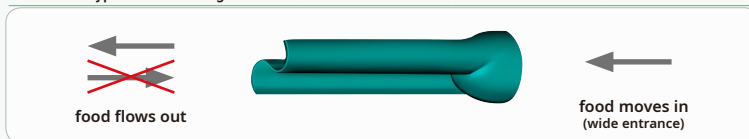
1 S-Valve inside the stent for anti-reflux :

The mean reflux symptom score decreased from 5.42 ± 3.40 to 2.50 ± 1.78 ($P = 0.005$) after stent placement.*

Dysphagia and reflux symptom scores with the three types of stent (Mann-Whitney U test)

	A (n = 12)	B (n = 12)	C (n = 12)
Dysphagia score (mean)			
Pre	3.25 ± 0.45	3.08 ± 0.69	2.83 ± 0.58
Post	1.00 ± 0.60	1.08 ± 0.69	0.91 ± 0.51
P	0.002	0.001	0.001
Reflux symptom score (mean)			
Pre	4.42 ± 3.40	5.58 ± 3.40	5.42 ± 3.40
Post	6.25 ± 2.70	5.75 ± 6.15	2.50 ± 1.78
P	0.049	0.798	0.005

A : Standard open stent; B : Dostent (antireflux stent); C : The newly designed stent with an S-type valve with long leaflets.



- 2 Dumbbell heads on the both ends for anti-migration
- 3 Gold radiopaque marker for precise stent placement
- 4 Lasso on the both ends for stent repositioning

* Source: Shim CS et al. "Management of Malignant Stricture of the Esophago-gastric Junction with a Newly Designed Self-Expanding Metal Stent with an Antireflux Mechanism" Endoscopy (2005)

Ordering Information

※ Sizing and availability varies by country

HEV

Model	Stent(mm)			Delivery Device	
	Diameter	Usable Length	Total Length*	Length (mm)	Diameter (mm/fr)
HEV-18-060-070	24-18-24	20	60	700	8/24
HEV-18-170-070		130	170	700	8/24
HEV-20-060-070	26-20-26	20	60	700	8/24
HEV-20-170-070		130	170	700	8/24
HEV-22-060-070	28-22-28	20	60	700	8/24
HEV-22-170-070		130	170	700	8/24

* Increment of 10mm